

# Perry & SiloMasters Silos

New Design - Latest Technology



&

**SILOMASTERS**



- Standard and bespoke range covering both flat bottom and hopper bottom silos.
- Flat bottom range from 3m diameter (20 tonne capacity) - largest being 32m diameter, and have a capacity up to 30,000 tonnes, based on wheat at 750kg/m<sup>3</sup>.
- Hopper bottom range start at 3m diameter (23 tonnes) - largest being 13m diameter and have a capacity up to 3,000 tonnes, based on wheat at 750kg/m<sup>3</sup>.
- 30 degree pitched roof, which provides integrity while maintaining low overall heights for conveyors & elevators and matches the natural angle of repose for stored materials.
- A unique single piece roof design is used on silos up to 16m diameter - simplifying installation and enhancing performance.
- All flat bottom silos include a cylinder access door and roof inspection hatch as standard - additional doors can be installed.
- Optimised design of wall stiffeners and steelwork.



[www.perryengineering.com](http://www.perryengineering.com)  
[sales@perryengineering.com](mailto:sales@perryengineering.com)  
+44 (0)1404 890300

Contact us today to  
speak to one of our  
experienced engineers!

*The UK's most experienced manufacturer of materials handling & drying equipment.*

# Perry & SiloMasters Silos

New Design-Latest Technology

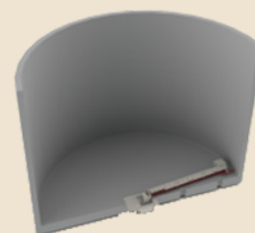
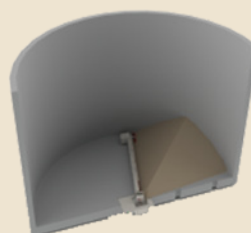
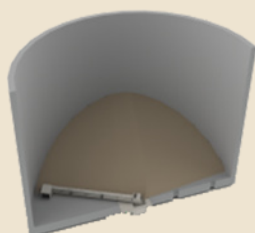
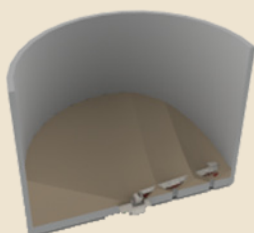
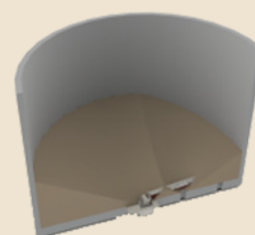
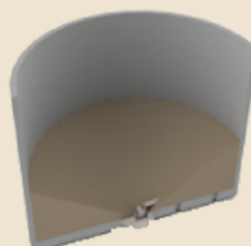
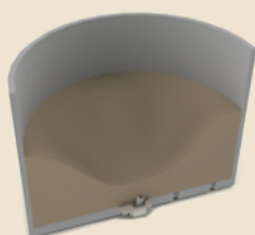
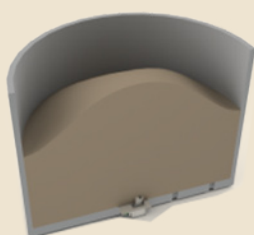


&

**SILOMASTERS**



- Silos are manufactured using high grade S450 steel, protected by galvanising to Z600 standard giving superior strength to weight characteristics and extremely long service life.
- New state of the art manufacturing facility.
- Standard catwalk widths between 1m and 3.4m, includes a 1.1m double handrail. Custom sizes for catwalks are available on request.
- Bin level indicators, control systems, level measurement and inventory management systems can be provided.
- Sweep augers are available - discharging capacities up to 700m<sup>3</sup> per hour. See below for pictures of a typical working sweep auger.



[www.perryengineering.com](http://www.perryengineering.com)  
[sales@perryengineering.com](mailto:sales@perryengineering.com)  
+44 (0)1404 890300

Contact us today to  
speak to one of our  
experienced engineers!

The UK's most experienced manufacturer of materials handling & drying equipment.